

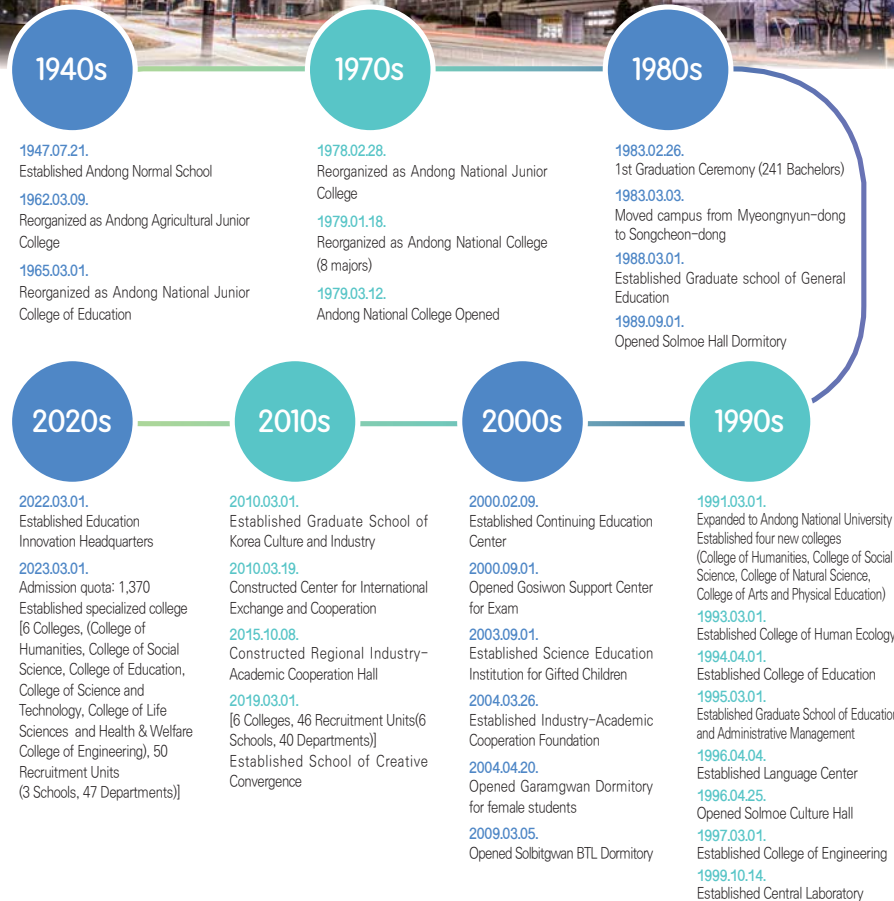
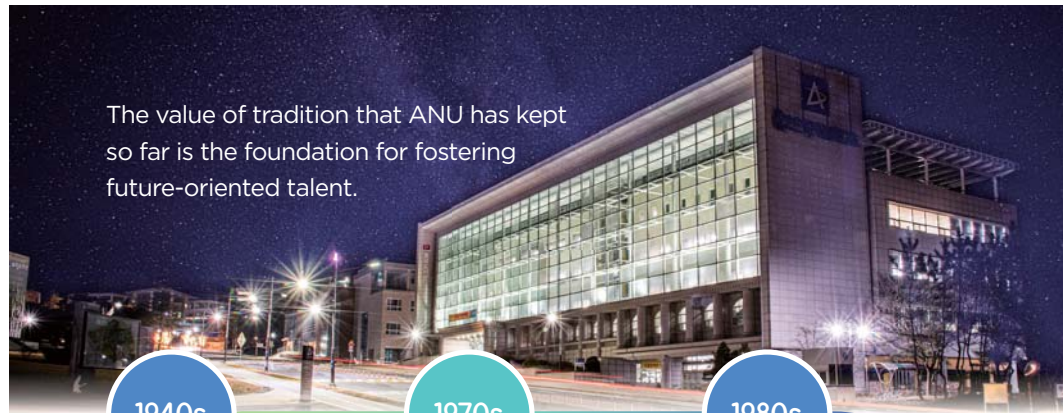
ANDONG NATIONAL UNIVERSITY

Forward ANU
Together A&U



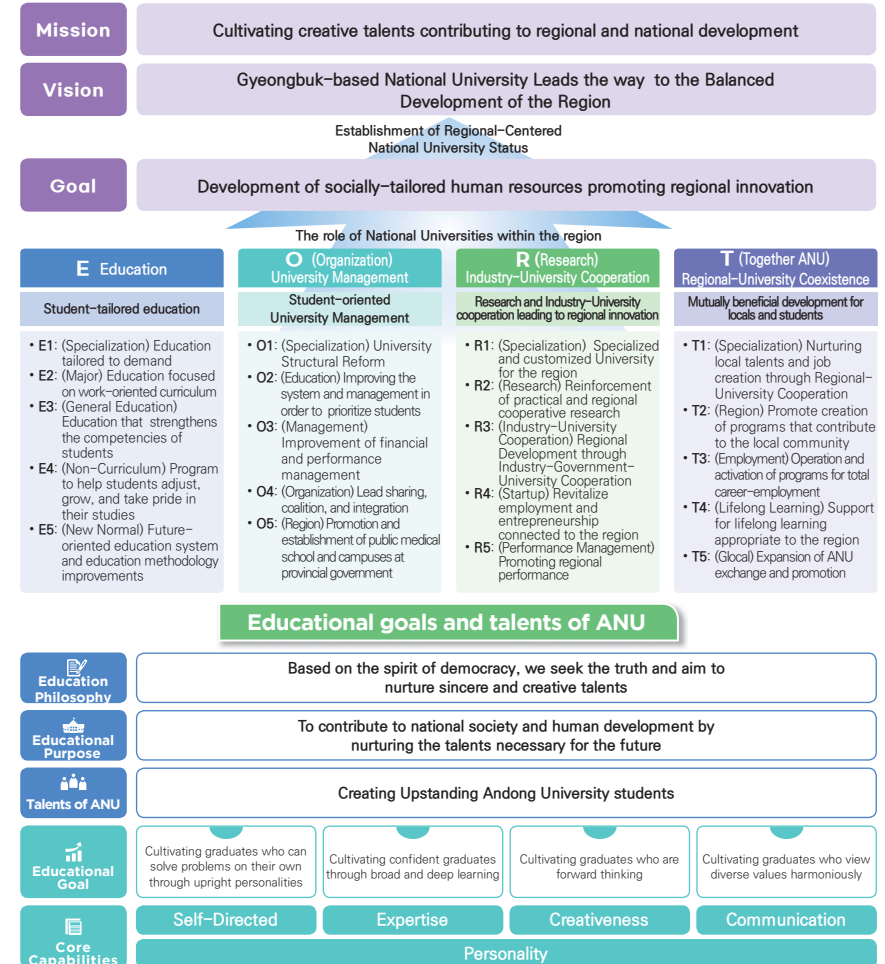
국립안동대학교
ANDONG NATIONAL UNIVERSITY

The value of tradition that ANU has kept so far is the foundation for fostering future-oriented talent.



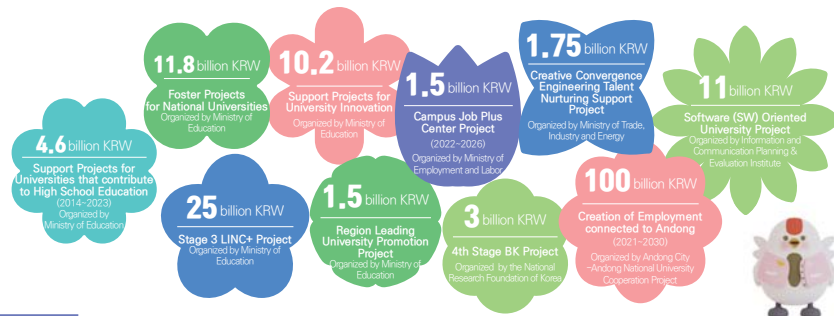
Gyeongsangbuk-do Base National University Leading Balanced Development of the Region

Andong University, a national university based in Gyeongsangbuk-do, leads balanced development of the region and fosters creative talent which contributes to regional and national development.



Has the potential to be one of the best National Universities. We will offer even greater support!

ANU was selected to conduct national projects in various fields. The excellent performance of national projects becomes the foundation for future-oriented and converging talent.



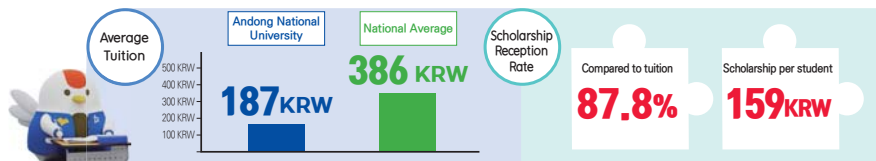
Better tuition at ANU

ANU supports students by offering the lowest level of tuition among all universities in Korea so that they can walk a path of flowers.

ANU has reduced or frozen the tuition for 14 consecutive years since 2009, so the average tuition per semester is now at 1.87 million KRW, the lowest level in the nation.

※ Per semester (as of 2023)/ Unit KRW

College (Category, department)	Average Tuition	College (Category, department)	Average Tuition
College of Humanities and Arts (excluding Department of Music and Performing Arts and Department of Fine Arts)	1,596,600KRW	College of Engineering	2,093,600KRW
College of Social Science		Department of Nursing	1,962,500KRW
College of Education(Department of Korean Language Education, Department of Ethics Education, Department of English Education)		Department of Fine Arts	2,062,700KRW
College of Science and Technology	1,916,500KRW	College of Education(Department of Electrical and Electronic Education, Department of Mechanical Engineering Education, Department of Mathematics Education)	
College of Life Sciences and Health & Welfare (excluding the Department of Nursing)		Department of Music and Performing Arts	2,269,700KRW
College of Education (Department of Educational Engineering, Department of Computer Education)		Department of Mathematics Education	1,606,100KRW
Department of Smart Sensor Engineering, Department of Creative Convergence			

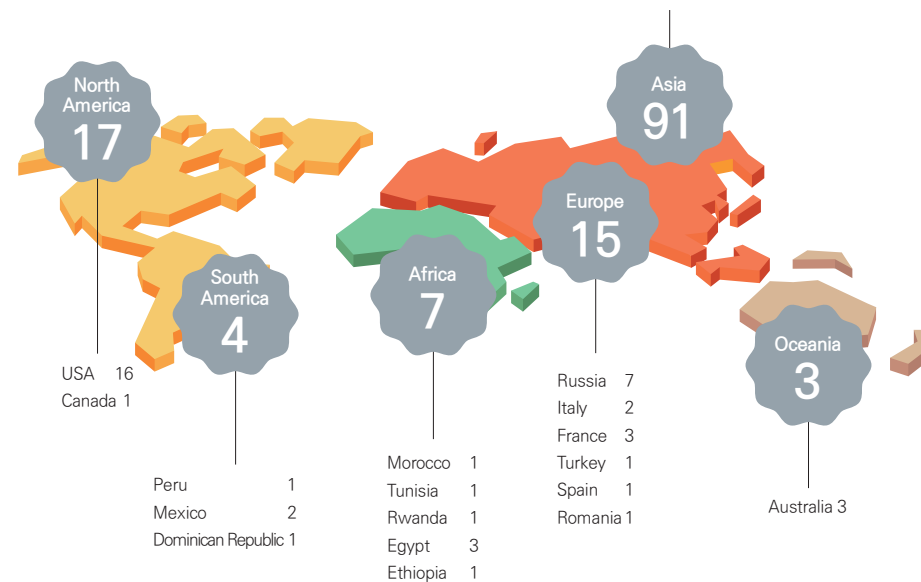


Global ANU

Status of Partner Organizations of the Andong National University International Exchange Program.

ANU is currently developing as a global university through international exchange programs with 137 universities and agencies from 34 countries.

Taiwan	2	Indonesia	3
Japan	6	Kyrgyzstan	3
China	28	Tajikistan	2
Kazakhstan	10	Vietnam	4
Philippines	18	Bangladesh	4
Cambodia	1	Pakistan	1
Nepal	2	Malaysia	2
India	1	Mongolia	1
Uzbekistan	3		



ANU International Exchange Program

Exchange Program for Students with Partner Universities from abroad	International Exchange Ambassador	Global short-term Language Training Program in overseas countries	Global Cultural Experience Program for Overseas Youth	Global Volunteer Activity Program
---	-----------------------------------	---	---	-----------------------------------

Undergraduate School

The road to a bright tomorrow

Andong National University, pioneering the future with a strong step towards a dream,

Andong National University is the path towards your dreams.



College of Humanities and Arts



Dept of Korean and Korean Literature / Dept of Chinese and Chinese Literature / Dept of European Culture and Tourism / Dept of Sino-Korean Studies / Dept of Cultural Heritage / Dept of Eastern Philosophy / Dept of History / Dept of Music and Performing Arts / Dept of Fine Arts

Cultivating talented people who will contribute to the cultural development of humankind.

The College of Humanities and Art pursues the convergent development of humanities and art.

Humanities strives to realize the value of the humanistic spirit and values through the study of literature, language, history, philosophy, culture, and folklore.

For the arts, students work hard to be experts in expressing their artistic senses with music, fine arts, etc.

The College of Humanities and Arts works to foster talented people that will lead both national and human culture by encompassing all of the studies for a decent human life, humanities for nurturing logic and emotion, and the arts.

College of Social Sciences



School of Business & Accounting (Business Administration Major/ Accounting & Tax Major)/ Dept of Economics / Dept of Trade / Dept of Law / Dept of Public Administration

Contributing to the development of humankind with systematic research of social phenomena.

The college of social science aims to train creative leaders who can develop the necessary theories to construct better communities and to lead positive social changes through studies on various social phenomena in our rapidly changing contemporary society.

The College of Social Science fosters intellectuals who can make human society valuable and admirable while helping students to rediscover their identities in the study of social science.

College of Education



Dept of Korean Language Education / Dept of Ethics Education / Dept of English Education / Dept of Educational Technology/ Dept of Mathematics Education / Dept of Information & Computer Science Education / Dept of Electrical & Electronic Engineering Education / Dept of Mechanical Engineering Education

Cultivating earnest teachers with an upright character and skill, and developing innovative talents.

The college has played a fundamental role in cultivating teachers since the time of Andong Normal School, the former version of ANU. Education is a scheduled and value-oriented activity that encourages students to become better people.

Accordingly, this college, with unwavering confidence and ideas regarding education, aims to educate teachers for secondary schools so that they can show their love for students and inspire them to pursue meaningful goals, with the curriculum for both the theory and practice of school education.

After graduation, students acquire the class 2 teaching certificate for secondary schools. The rate of graduates who pass the teacher appointment test currently ranks above the average among colleges of education around the nation.

College of Sciences & Technology



Dept of Chemical and Biotechnology / Dept of Earth and Environmental Sciences / Dept of Information and Statistics

Understanding the depth of science with logical thinking and pioneering new fields of study.

The College of Science and Technology teaches students how to logically and systematically study and understand scientific phenomena occurring in the natural world through theory and experimentation in preparation for the 21st century. In order to revitalize natural science research, the educational goal aims to teach the materials and laws of nature that compose the natural world as well as nurture the core local talents with the spirit of intellectual inquiry and practical skills. Also, it seeks to nurture creative professionals with innovative thinking and creative problem-solving capabilities.

College of Life Sciences and Health & Welfare



Dept of Life Sciences / Dept of Vaccine Biotechnology / Dept of Smart Horticultural Science / Dept of Forest Science / Dept of Plant Medicine / Dept of Food and Biotechnology / Dept of Nursing / Dept of Food and Nutrition / Dept of Child Welfare and Social Welfare / Dept of Physical Education / Dept of Fashion Lifestyle

Cultivating a wide range of talents to build Andong University's unique brand value.

The College of Life Sciences and Health & Welfare, a specialized college, consists of Department of Life Sciences, Dept of Vaccine Biotechnology, Dept of Plant Medicine, Dept of Smart Horticultural Science, Dept of Forest Science, Dept of Food and Bio technology, Dept of Food and Nutrition, Dept of Nursing, Dept of Child and Social Welfare, Department of Physical Education, and Fashion Life. 60 full-time professors with excellent education and research capabilities teach around 1,500 undergraduates and graduates.

College of Engineering



School of Electrical and New Material Engineering (Electrical Energy Engineering Major / New Material Energy Engineering Major) / Dept of Advanced Materials Engineering / Dept of Mechanical Engineering / Dept of Automotive Engineering / Dept of Machine and Robot Engineering / Dept of Electronic Engineering / Dept of Information and Communication Engineering / Dept of Computer Engineering / Dept of Software Convergence Engineering / Dept of Civil Engineering / Dept of Environmental Engineering / Dept of Architectural Engineering / Dept of Smart Sensor Engineering

School of Creative Convergence



Cultural Content Convergence Major / Media Communication Convergence Major / Emerging Market & Business Convergence Major / Psychological Science Convergence Major / Intelligent Information Technology Convergence Major

The 4th industrial revolution meets technology to pioneer and create a new future.

The College of Engineering cultivates practical engineers with knowledge and the skills to adapt to on-the-job performance in the contemporary industrial society.

The College also nurtures the talent of understanding engineering problems precisely, solving them creatively, and creating new technologies and industries by blending knowledge and information.

In particular, it aims to nurture cutting-edge professionals who will lead the 21st century by integrating robots, sensors, new materials, machines, and IT technologies, which are essential technologies of the 4th industrial revolution.

Preparing convergent, talented individuals for the 4th industrial revolution.

The School of Creative Convergence was established in 2019 to enable interdisciplinary talents to major in multiple subjects for the 4th industrial revolution. It aims to foster flexible, future-oriented graduates who can connect and understand multiple academic fields for contemporary society.

The sophomores of the School of Creative Convergence can choose and shift their majors(minors) freely, or they can major in Cultural Contents Convergence, Media Communication Convergence, Emerging Market & Business Convergence, Psychological Science Convergence, Intelligent Information Technology.

Graduate Schools

General Graduate School

The General Graduate School studies academically profound theory and various application methods in order to nurture high-quality human resources such as scholars who will lead the academic development of an informational society, experts who can resolve a multitude of social problems, and leaders who can contribute to the prosperity of the nation and our community.

Graduate School of Administration and Management

The Graduate School of Administration and Management aims to contribute to national competitiveness and economic development, teaching government employees and executives of official businesses new theories and techniques of economy and business administration.

Our graduates are currently showing their prominent skills and demonstrating excellent leadership in a variety of fields in society to lead national development.

Graduate School of Education

The Graduate School of Education serves the role of nurturing creative and competent education experts required by an information-based society by teaching comprehensive theories of education and academics and their methods of application.

The Graduate School of Education offers two courses: the professional educator course and the re-education course.

Graduate School of Creative Industry

The Graduate School of Creative Industry is a special-purpose graduate school dedicated to fostering professional human resources in cultural content areas to contribute to the development of cultural industry in our knowledge-based society.

The master's course operates in six major fields: spatial content, cultural planning, cultural education, culture and arts management, storytelling, and festival performances. The Ph.D. program specializes in interdisciplinary content and fosters professional human resources who present various perspectives on cultural content.



International Student Admission

Qualification

Academic Qualification

Classification	Applicant Qualification
Undergraduate	Those who have completed (or expected) entire education which is equivalent to Korea's 12-year educational system outside of Korea and the applicant and both parents are native-born foreigners.
Undergraduate Transfer	Those who have eligibility for undergraduate admission and are applicable to one of the following two. 1) Those who have graduate (or expected) 2 years or more at 4-year university in Korea or abroad 2) Those who have completed (or expected) 2-year or 3-year college (Only 3-year college for China) in Korea or abroad
Graduate	Those who have received or expected to receive bachelor / master's degree after receiving whole education from elementary to undergraduate education

Language Proficiency

Course	Qualification
Undergraduate	• Those who have TOPIK level 3 or above
Graduate	• (Regular Application) Must Meet the term below 1) Those who have TOPIK level 3 or above • (English Track Application) Meets at least one of the two terms below 1) TOEFL CBT197, IBT71, IELTS 5.5, CEFR B2, TEPS 600 or above 2) No Language Score required for students who's mother language or national language is English

Application Schedule

Classification	Undergraduate		Graduate	
	Spring Semester	Fall Semester	Spring Semester	Fall Semester
Submission of Application Documents	November Every Year	May Every Year	October Every Year	May Every Year
Notification of Admission Result	In January of the following year	In August	In January of the following year	In June

※ The exact schedule for admission will be announced ANU admission web-page (<http://ipsi.andong.ac.kr>).

Korean Language Institute(KLI)

Course

Beginner's Level	Intermediate Level
Level 1 (10weeks)·Level 2 (10weeks)	Level 3 (10weeks)·Level 4 (10weeks)

Schedule

Semester	Spring (March, 400hours)	Fall (September, 400hours)
Studying Period	March ~ July	September ~ January
Submission of required documents	During the month of November	During the month of May
Announcement of Admission Decision	Late December	Late June

Fees for Registration

Classification	Amount(KRW)	Remarks
Application Fee	60,000KRW	Applicants from overseas
Tuition Fee	1,800,000KRW	20weeks (400hours)
Textbook Fee	About 150,000KRW	20weeks (400hours)
Insurance Fee	About 100,000KRW	Six Months

※ Tuition Fee may change depending on the number of accepted student per semester.

Contact

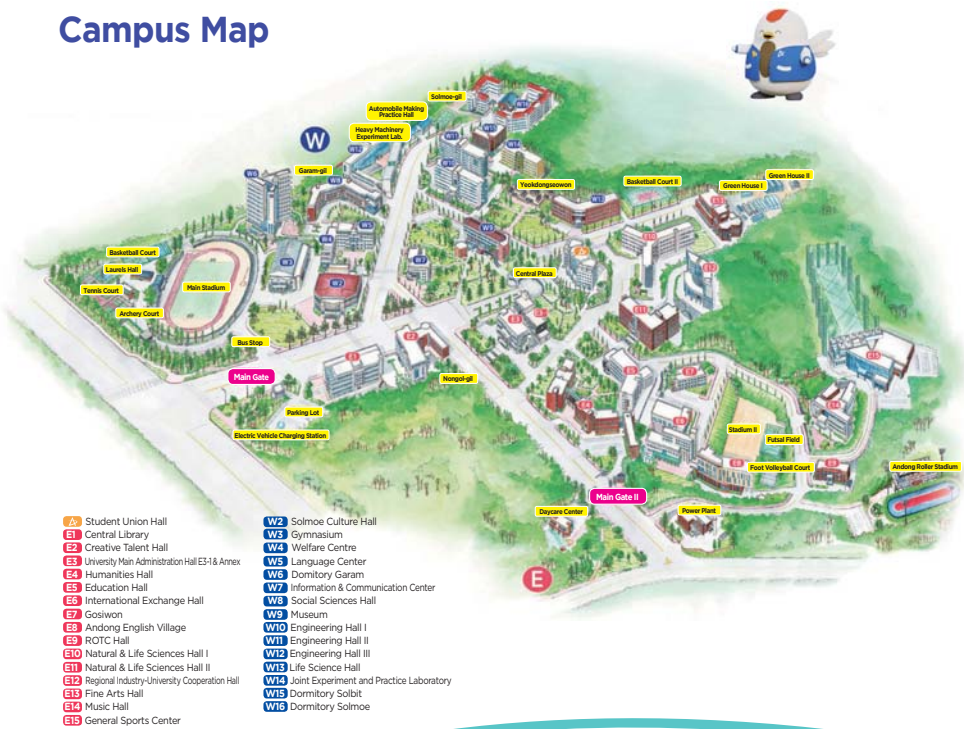
Office of International Cooperation

Website: <http://ic.anu.ac.kr/>

Tel: +82-54-820-7101-2

E-mail: anukorea@anu.ac.kr (Korean Language Program, Undergraduate)
anuglobal@anu.ac.kr (Graduate)

Campus Map



ANDONG NATIONAL UNIVERSITY IS GETTING CLOSER!

Only an hour and 20 minutes from Seoul to Andong!

— Will be operate 8 times a day at Seoul Station from November 2023

Both Seoul and Busan are 1 hour living area from Andong!

— Andong-Busan KTX line is being promoted to open from 2024

Enjoy your trip to Korea while studying in Andong, where everywhere is close

High Speed Train KTX-EUM