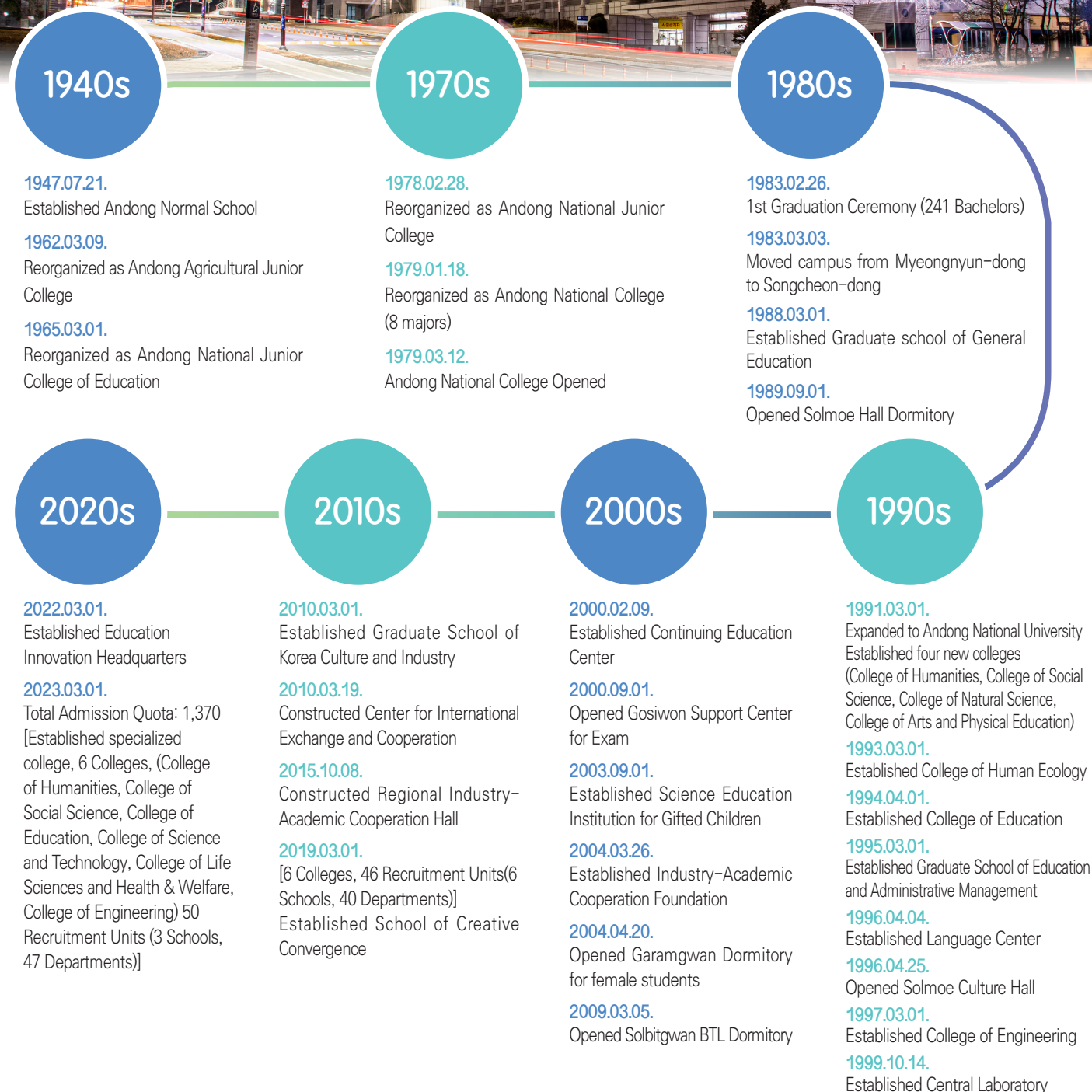


ANDONG NATIONAL UNIVERSITY



국립안동대학교
ANDONG NATIONAL UNIVERSITY

The value of tradition that ANU has kept so far is the foundation for fostering future-oriented talent.





**Student Capacity Building Gyeongbuk Core
National University (S-CORE ANU),
Glocal University,
Andong National University**



Chung, Tai-joo
President of Andong National University



Welcome to Andong National University.

Since its opening in 1947, Andong National University has shared the VISION of being a 'Gyeongbuk hub national university' leading regional development, and all members are moving forward vigorously to cultivate future convergence talents who will lead the era of the 4th Industrial Revolution.

Based on the honorable performance of the final selection as a 'Glocal University', it is one of the most competitive national universities that will transform Gyeongsangbuk-do into the light of Korea through integration with Gyeongbuk Provincial College in 2025 and integrated operation with seven educational and research institutions in Gyeongsangbuk-do, in addition to being a global university. We are preparing to become a world-leading K-humanities university whose competitiveness can be recognized worldwide. We are also doing our best to attract students to Andong National University Medical School to revitalize public healthcare in the Gyeongbuk region.

In addition to this, Andong National University focuses on university management that puts students first (Student First), and pursues "coexistent development of the region and students (Cooperation)," "student-centered university management (Organization)," and "research and industry-academia linked to the region," (Research)" and "Student-tailored education innovation (Education)". These are complementary and integrated, and we will leap forward to become a "Student Competency Enhancement Gyeongbuk National University (S-CORE ANU)" along with sustainable growth.

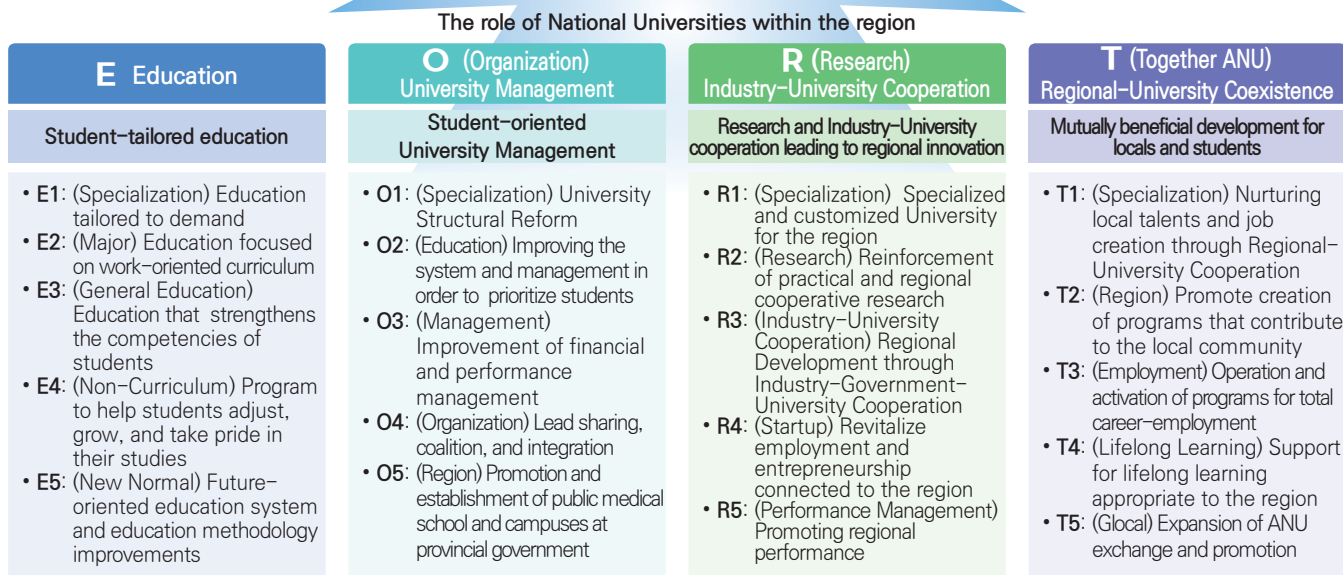
Within the framework of S-CORE ANU, which shares students' presents and futures, our students will be reborn as socially-tailored talents who contribute to regional and national development and lead regional innovation.

We ask for your interest and support for Andong National University and our students, who are taking steps forward with the passionate efforts and combined capabilities of our members.

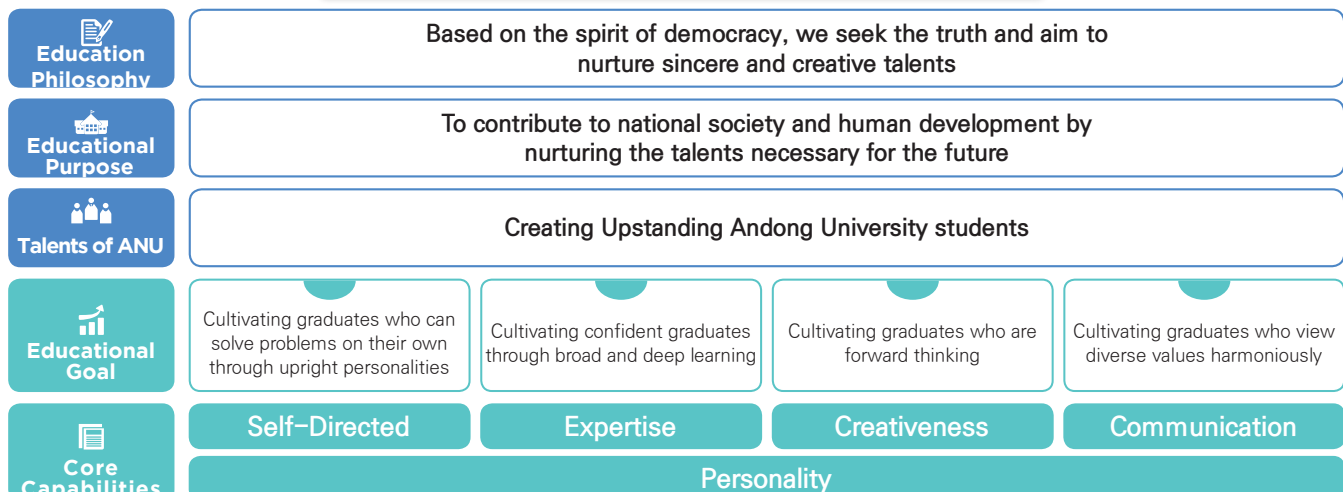
Gyeongsangbuk-do Base National University

Leading Balanced Development of the Region

Andong University, a national university based in Gyeongsangbuk-do, leads balanced development of the region and fosters creative talent which contributes to regional and national development.



Educational goals and talents of ANU



Has the potential to be one of the best National Universities.

We will offer even greater support!

ANU was selected to conduct national projects in various fields
The excellent performance of national projects becomes the foundation for future-oriented and converging talent.



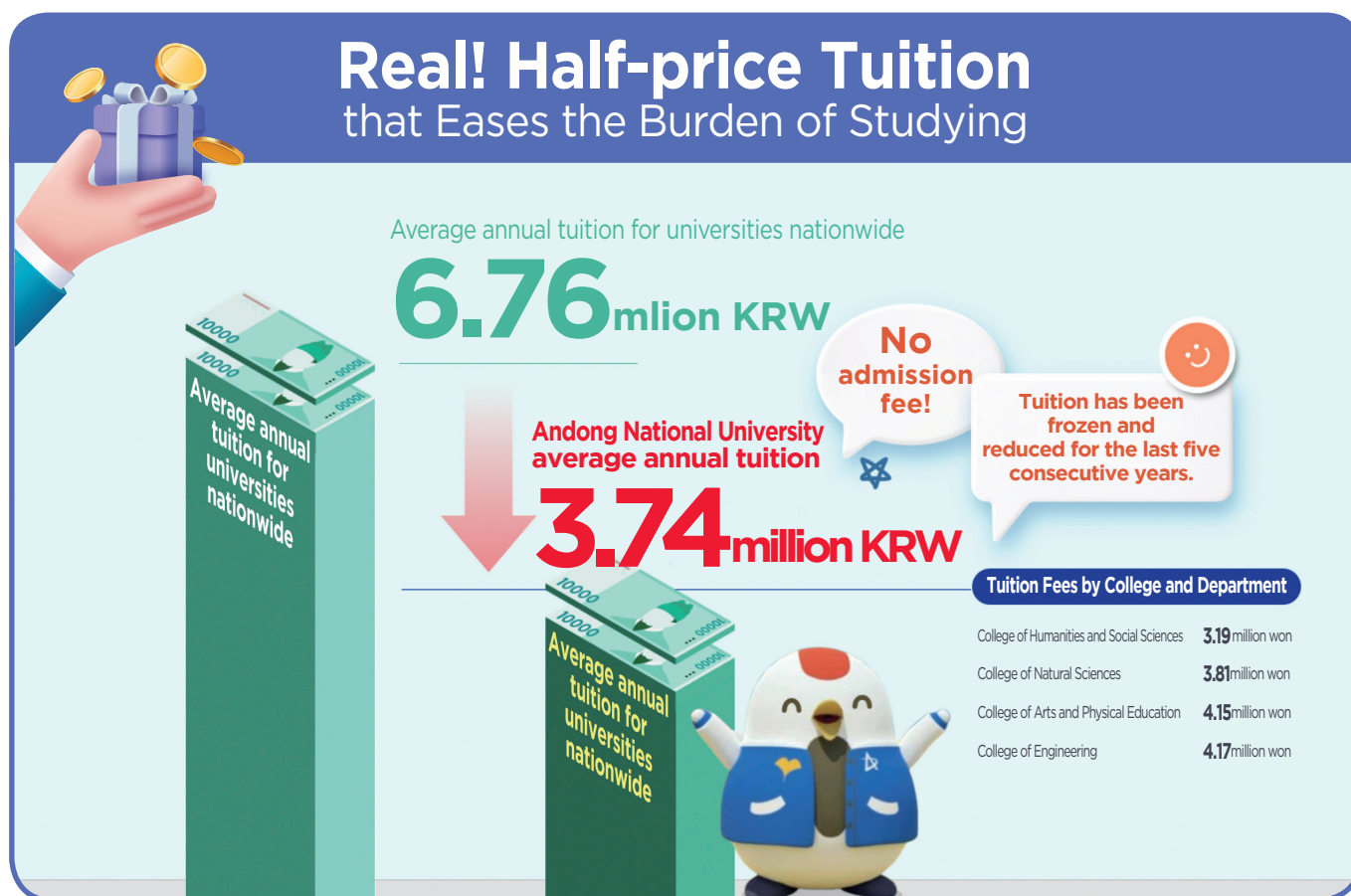
Better Tuition at ANU

Andong University, a national university based in Gyeongsangbuk-do, leads balanced development of the region and fosters creative talent which contributes to regional and national development.

ANU has reduced or frozen the tuition for 14 consecutive years since 2009, so the average tuition per semester is now at 1.87 million KRW, the lowest level in the nation.

※ Per semester (as of 2024)/ Unit KRW

College (Category, Department)	Tuition	College (Category, Department)	Tuition
College of Humanities and Arts (excluding Department of Music and Performing Arts and Department of Fine Arts) College of Social Science College of Education (Department of Korean Language Education, Department of Ethics Education, Department of English Education) Department of Liberal Studies	1,596,600 KRW	College of Engineering (excluding Department of Smart Sensor, Department of Chemical Bio Engineering)	2,093,600 KRW
		College of Life Sciences and Health & Welfare (Department of Nursing)	1,962,500 KRW
		College of Humanities and Arts (Department of Fine Arts) College of Education (Department of Electrical and Electronic Education, Department of Mechanical Engineering Education)	2,062,700 KRW
College of Social Science (Department of Data Science) College of Education (Department of Educational Engineering, Department of Computer Education) College of Life Sciences and Health & Welfare (excluding the Department of Nursing) College of Engineering (Department of Smart Sensor, Department of Chemical Bio Engineering) Department of Adult Learner	1,916,500 KRW	College of Humanities and Arts (Department of Music and Performing Arts)	2,269,700 KRW
		College of Education (Department of Mathematics Education)	1,606,100 KRW



Employment/start-up Support and Counseling Programs



ANU supports talented people's successful advancement into society.

ANU supports talented people's successful advancement into society.

Employment programs help talented people explore, choose, and prepare for their careers.

We provide the best programs to enable flexible employment in changing industries and environments.

● Employment/Startup Support Program

- **(Career setting)** Special lectures for current employees, career group counseling
- **(Motivation enhancement)** Motivation enhancement employment group counseling
- **(Job-matching certification program)** Computer literacy, CAD, CATIA, Six Sigma, HACCP, ISO certified certification, computer programming, etc.
- **(Smart college life)** Notion, records, blog, immersion, Google Apps, etc.
- **(Long-term education program for the 4th industrial revolution)** Smart factory, big data, artificial intelligence course, K-digital training, etc.
- Resume and self-introduction for employment. National Employment Support System work experience programs such as NCS, large company aptitude test, interview, TOEIC speaking, etc.

● Student Competency Management System

- A program that helps students comprehensively manage their careers from career goal setting to employment and lead a successful college life.
 - Operates so that students can systematically manage their careers by linking various data such as non-curricular program application and recommendation, competency management, career planning, career roadmap by department, and counseling application (professor, career, counseling)
- Credits granted and scholarships awarded based on performance in counseling, career and employment/start-up programs while in school

● Employment Support Consulting

- (Employment Counseling) Through 1:1 counseling, systematic job preparation guidance starting from the lower grades, including employment career planning guidance and employment competency strengthening education, helps build confidence in applying for a job.
- (Employment placement) We provide a variety of employment information that takes students' aptitude, capabilities, and desired conditions into consideration, and we actively help our school's excellent students be hired through job application editing, interview guidance, human resource promotion for recruiting companies, and employment discussions.
- Provide support for accompanying interviews and participation in job fairs

● Operating University Job Plus Center

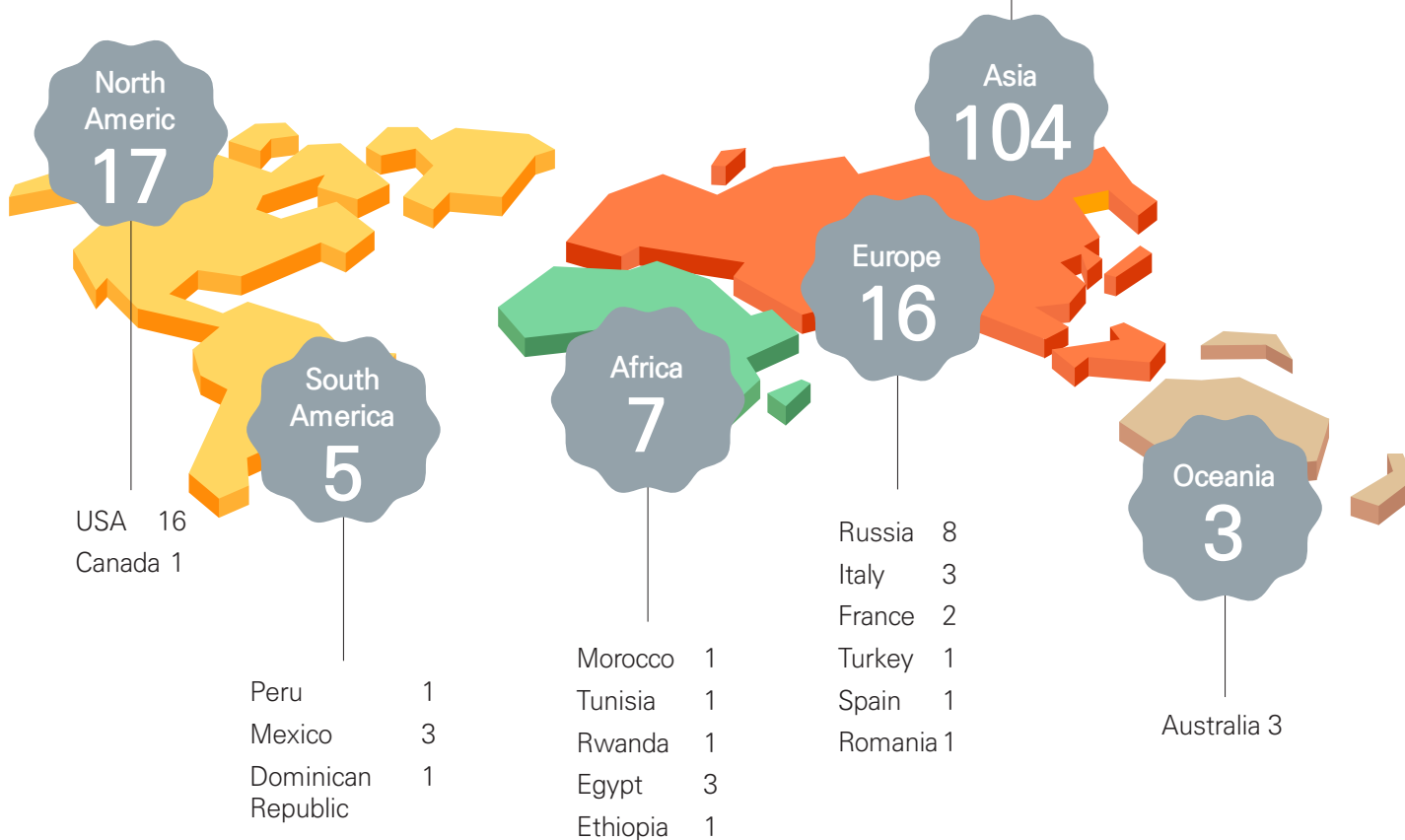
- Professional counselors provide 1:1 customized career and employment counseling for seniors, graduates, and local youth at each college level.

Global ANU

Status of Partner Organizations of the Andong National University International Exchange Program

ANU is currently developing as a global university through international exchange programs with 152 universities and agencies from 36 countries.

Taiwan	1	Kyrgyzstan	3
Japan	7	Tajikistan	2
China	32	Vietnam	8
Kazakhstan	10	Bangladesh	4
Philippines	19	Pakistan	1
Cambodia	1	Malaysia	2
Nepal	2	Mongolia	1
India	1	Hong Kong &	
Uzbekistan	3	Macao	2
Indonesia	3	Thailand	2



ANU International Exchange Program

Exchange Program for Students with Partner Universities from abroad	International Exchange Ambassador	Global short-term Language Training Program in overseas countries	Global Cultural Experience Program for Overseas Youth	Global Volunteer Activity Program
---	-----------------------------------	---	---	-----------------------------------

Undergraduate School

The road to a bright tomorrow

Andong National University, pioneering the future with a strong step towards a dream,

Andong National University is the path towards your dreams.



College of Humanities and Art



Cultivating talented people who will contribute to the cultural development of humankind

The College of Humanities and Art pursues the convergent development of humanities and art. Humanities strives to realize the value of the humanistic spirit and values through the study of literature, language, history, philosophy, culture, and folklore.

For the arts, students work hard to be experts in expressing their artistic senses with music, fine arts, etc.

The College of Humanities and Arts works to foster talented people that will lead both national and human culture by encompassing all of the studies for a decent human life, humanities for nurturing logic and emotion, and the arts.

● Department of Korean Language and Literature

The Department of Korean Language and Literature aims to foster talented individuals who can systematically acquire knowledge about Korean language and literature in general and contribute to the independent understanding and creative development of national culture. In addition, in order to encourage academic motivation, we hold regular academic field trips and academic presentations to deepen our professional knowledge and strengthen our capabilities as scholars and leaders.

Career paths and prospects: Career opportunities include teaching, government and public enterprises, journalism, literary circles, research institutes, and graduate school. Recently, students are also entering the workforce as web novel writers and webtoon writers.

● Department of Chinese Language, Literature and Culture

The Department of Chinese Language, Literature, and Culture aims to cultivate talented individuals who can advance into the world in the global era by providing intensive education in language, literature, and culture to properly understand and learn about China, which has rapidly emerged as an economic powerhouse on the world stage. Currently, we are training experts who can engage in work related to China under the guidance of two Korean professors and two Chinese professors. Every year, about 40 students study in China or Taiwan for one or two semesters as exchange students or training programs..

Career Paths and Prospects: It is possible to advance into various fields, including middle and high school Chinese language teacher, interpreter/translator, tour guide, flight attendant, trading company, government and public enterprise, broadcasting station, reporter, media and publishing industry, civil servant, and graduate school.

● Department of Chinese Character Culture Contents

The Department of Chinese Character Culture Contents is a new department that will be launched in 2024 by expanding and reorganizing the existing Department of Chinese Literature in order to actively respond to the rapidly changing digital cultural environment. By adding the ability to utilize cultural content to the humanities competency centered on Chinese characters, the main purpose is to cultivate future talent centered on the humanities, both in name and reality. To date, humanities education centered on Chinese characters has been faithfully implemented, and many seniors have entered related fields such as researchers, translators, curators, teachers, civil servants, and publishers, and various related programs are being operated.

Career Paths and Prospects: Chinese character teacher (can obtain secondary school teacher level 2 certification), civil servant (firefighting, police, corrections, local civil servant, etc.), researcher (university research institute, Korean Studies Institute, local cultural center, etc.), translator (Institute for the translation of Korean Classics, Hub Translation Center, Honam Institute for Korean Studies, Chungnam Institute of History and Culture, etc.), curators (Andong Cultural Center, Yeongju Cultural Center, Uiseong Cultural Center, Yecheon Cultural Center, Andong City Museum, World Confucian Culture Museum, Andong Sunbi Culture Museum, Andong History and Culture Museum, Hahoe World Mask Museum, etc.), media publishers, cultural content developers (Kakao, CJ E&M, New ID, NCSoft, Smilegate, Webzen, Gameville, Daehong Communications, Daewon CI, Jo Ara, etc. various cultural content-related companies and cultural foundations) etc. are available for employment.

● Department of Cultural Heritage

The Department of Cultural Heritage is a department that explores the importance and meaning of cultural heritage based on Korean traditional culture, especially folklore, and ways to utilize it in modern times. Specifically, we learn about the meaning and value of intangible cultural heritage such as food, clothing and housing, folk religion and ritual, folk art and play, folk tales and folk songs, and production activities, to tangible cultural heritage such as buildings, relics, and artwork. Additionally, by learning about the Korean lifestyle and traditional culture-related knowledge from the past to the present, you will be equipped with the ability to work as a cultural heritage expert at home and abroad. In addition, you can develop the ability to apply the results of your extensive learning to movies and dramas, festivals and events, museum exhibitions and education, performing arts and storytelling, etc., where popular demand is rapidly increasing.

Career Paths and Prospects: In addition to working as a researcher at national and public museums and local government curators, university professors, the Cultural Heritage Administration, cultural foundations of various local governments, cultural heritage research institutes, and cultural research institutes, there is also work as a professional in the fields of academia, broadcasting, and the media. Recently, we are pioneering new jobs by advancing into various cultural industries such as cultural contents, cultural tourism, and festivals.

● Department of Media, Culture and Communication

The goal of the Department of Media, Culture and Communication is to cultivate experts in the field by fostering a mature understanding of media technology, cultural contents, and local humanities traditions, as well as creative thinking and convergent communication skills. In particular, the specialty of this department is that it combines humanities knowledge and understanding of cultural areas with practical skills to promote cultural consilience between tradition and modernity, creative use of new media and video technology, and modern interpretation and application of cultural resources..

Career Paths and Prospects: It is possible to advance into a career as a media content and cultural content planning and production expert, culture and arts educator, local culture expert, PD, broadcast writer, storyteller, video expert, exhibition planner, cultural heritage media creator, etc.

● Department of History

History broadens understanding of human culture and Korean culture through scientific awareness of the past and subjective sense of history. Powerful history contributes to expanding the overall and core understanding of the core content of the cultural industry, Korea and the diverse history and culture of the East and the West.

Career Paths and Prospects: Fields related to secondary school history teachers, government-funded and elective humanities research institutes, curators, city/provincial cultural administrators, and cultural content (broadcast films, advertisements, animation, etc.) are promising.

● Department of Performing Arts and Music

In our Department of Performing Arts and Music, you can develop practical skills in your major field and learn related music theory in depth. A variety of subjects are offered, and through sincere lectures by professors in charge of each subject, we make it possible to nurture creative musicians. Although our performing arts music department is a 'department', it has an independent building, and in that respect, it boasts a scale similar to that of many other private universities across the country. Specifically, it is equipped with classrooms for each major, including a newly built performance hall with approximately 300 seats, a computer music room, an opera room, an ensemble room, a piano ensemble room, and a practical music ensemble room, and each classroom is fully equipped with a state-of-the-art audio-visual system and cooling and heating systems.

In addition, there are a total of 36 practice rooms, providing ample practice space. The practice room is also fully equipped with a heating and cooling system so you can practice comfortably.

Career Paths and Prospects: One can work in various fields such as professional performer, educator, music therapist, cultural arts educator (level 2), music academy operation, university professor, university lecturer, broadcasting station, and IT industry.

● Department of Fine Art

The Department of Fine Art's educational goal is to produce artists as complete individuals with a rich sense of aesthetics and creative formative skills through a balanced curriculum of theory and practice, and to acquire qualifications as art educators, 10% of the quota (completion of a teaching course) can obtain a secondary level 2 regular teacher certificate.

Career Paths and Prospects: One can advance to as a writer, art teacher, academy operator, elementary school teacher, art museum curator, freelance designer, etc. or work in various art and design fields such as corporate planning and publicity offices, broadcasting stations, animation, environmental sculpture design, advertising publicity, and publication planning.

College of Social Science



Contributing to the development of humankind with systematic research of social phenomena

The College of Social Science aims to train creative leaders who can develop the necessary theories to construct better communities and to lead positive social changes through studies on various social phenomena in our rapidly changing contemporary society. The College of Social Science fosters intellectuals who can make human society valuable and admirable while helping students to rediscover their identities in the study of social science.

● Department of Economics

In keeping with the global era, the Department of Economics has globally competitive faculty members who majored in financial economics, public economics, and big data analysis at leading universities around the world such as in the United States, France, and Australia. The Department of Economics has comparative advantages in the fields of financial economics, public economics, and applied and practical economics, and has established courses essential for employment, finance, and corporate work. In particular, we are cultivating planning and practical skills to respond to changes in the economic and social environment.

Career Paths and Prospects: One can work in many fields, including finance, industry, national organizations, public institutions, academia, research institutes, and media organizations.

● Department of Trade

In accordance with its academic mission to drive economic growth through international trade, the Department of Trade's academic goals are to nurture trade professionals and develop the character that international experts must possess. To this end, we analyze and understand international trade and its overall phenomena, and cultivate insight and practical adaptability into the management activities of international companies and international commerce activities based on expert knowledge of international management and trade practices.

Career Paths and Prospects: Diverse, including general corporations, government agencies and international organizations related to trade and commerce, various trade-related organizations, financial institutions, customs brokers, and trade business start-ups.

● Department of Management and Accounting-Business Administration Major

The Business Administration major educates the basics and applied theories of corporate management, including production, marketing, human resources, finance, accounting, and strategic management, with the goal of nurturing global professional managers who contribute to the development of the national economy and local communities, as well as various field training courses. By cultivating a wide range of management practices and professional capabilities through programs such as and global exchange students, we are producing business students with rational management decisions, smooth interpersonal relationships, and excellent leadership.

Career Path and Prospects: By acquiring various certifications in the management field, we are advancing into large and mid-sized companies, foreign companies, public enterprises, educational institutions, research institutes, or starting venture companies.

● Department of Management and Accounting-Accounting and Tax Major

The Accounting and Tax major provides a curriculum to train experts in accounting and taxation, and is run by faculty members with excellent research capabilities and expertise such as the Korea Institute of Certified Public Accountants (KICPA) and the American Institute of Certified Public Accountants (AICPA). Accounting and tax majors can be equipped with accounting information production and reporting capabilities, financial information analysis and interpretation capabilities, tax theory understanding and practical capabilities, and management decision-making strategy establishment capabilities.

Career Paths and Prospects: One can advance into as the social demand for accounting and tax experts has rapidly increased, it is easy to get a job, and graduates of the accounting and tax major can work in professional positions such as certified public accountants and tax accountants, tax officials in national and local positions, and accounting and tax fields in public and private companies.

● Department of Law

The Department of Law teaches students theories about law and the legal system and trains them to apply the theories to actual cases, thereby fostering students' ability to solve various legal problems that arise in society and encouraging students to think and act normatively. The ultimate goal is to recognize and implement the responsibilities of social leaders.

Career Paths and Prospects: It is possible to advance into various fields of society, including law school, civil servants in various fields (court positions, prosecutors, police, immigration management, general administration, etc.) various construction companies, businesses, and university professors.

● Department of Public Administration

Public administration studies the operation of governments and public institutions, policy establishment, and organizational management, and pursues social development and public welfare. Accordingly, the Department of Public Administration aims to foster competent human resources in the government and public institutions for desirable national management by systematically understanding public administration and policies and cultivating the basic knowledge required as future public officials. On average, approximately 17 people per year enter public service and we are advancing.

Career Paths and Prospects: One can advance into various fields such as government and public institutions, public enterprises, social welfare institutions, and research institutes.

● Department of Culture and Tourism

Now is the era of culture and tourism. Everyone enjoys culture and tourism and engages in tourism activities anytime and anywhere. The size of the cultural tourism market is rapidly becoming specialized and expanding. In line with this trend of the times, the Department of Culture and Tourism trains experts in cultural content planning, cultural tourism product development, and cultural industry.

Career Path and Prospects:

- Language module: Entering foreign tourism companies, international organizations, foreign consulting companies, tourist interpreters and guides, KOTRA entering the European region, etc.
- Culture module: video editor, exhibition planner, cultural content planner, cultural marketer, storyteller, composition writer, performance planner, theater/film critic, content creator, etc.
- Tourism module: Tourist interpretation guide, tourism product developer, festival expert, MICE expert, travel agency, hotel, theme park, airline/railway/ship company and crew, entry into public tourism enterprise, etc.

● Department of Data Science

The Department of Data Science operates a systematic curriculum for each grade to nurture competitive data experts with the goal of nurturing experts in statistical-based data science practical analysis needed in the era of the 4th Industrial Revolution. In addition, we provide the best educational curriculum by supporting and operating various extracurricular programs to strengthen students' practical skills and capabilities.

Career Paths and Prospects: One can work as a big data expert, data scientist, data engineer, or artificial intelligence expert in almost any industry, including healthcare, finance, energy, beauty, and games.

College of Education



Cultivating earnest teachers with an upright character and skill, and developing innovative talents

The College of Education has played a fundamental role in cultivating teachers since the time of Andong Normal School, the former version of ANU. Education is a scheduled and value-oriented activity that encourages students to become better people. Accordingly, this college, with unwavering confidence and ideas regarding education, aims to educate teachers for secondary schools so that they can show their love for students and inspire them to pursue meaningful goals, with the curriculum for both the theory and practice of school education. After graduation, students acquire the class 2 teaching certificate for secondary schools. The rate of graduates who pass the teacher appointment test currently ranks above the average among colleges of education around the nation. In addition, we provide opportunities to advance into various fields other than teaching, depending on the academic characteristics of each department.

● Department of Korean Language Education

The Department of Korean Language Education was established in March 2012 to train virtuous and competent Korean language teachers in secondary schools by lecturing on academic theories and practices in the fields of Korean language education, Korean language studies, classical literature, and modern literature. Under the guidance of the major professor, we conduct self-governing student council activities and run small groups related to Korean language education, Korean language, classical literature, and modern literature to explore academics in depth and make every effort to advance as teachers by cultivating major abilities.

Career paths and prospects: Most graduates are employed as middle school teachers and educational civil servants, but others are also expected to advance into society, such as professors and researchers majoring in Korean language education and Korean language and literature, civil servants, and the newspaper and broadcasting industries.

● Department of Ethics Education

The Department of Ethics Education aims to train secondary school moral and ethics teachers. To this end, we cultivate academic foundations such as Eastern and Korean ethical thought, Western ethical thought, political thought, and social thought, as well as subject educational methods and teaching perspectives based on this.

Career Paths and Prospects: To date, graduates are active in various fields, including middle and high school teachers, scholars, public officials, and office workers.

● Department of English Education

The Department of English Education was established in 1980 to train competent and excellent English teachers to work in secondary schools by teaching academic theories and practices in the fields of English literature, English studies, and English education. Each year, we provide special lectures in preparation for the employment examination and special lectures for graduates who passed the examination several times to provide information necessary to strengthen the capabilities of prospective teachers.

Career Paths and Prospects: Currently, graduates are working as English teachers in secondary schools across the country, and every year, we produce a large number of people who pass the civil service positions, including national positions, general administration, educational administration, and corrections.

● Department of Educational Technology

The Department of Educational Technology at Andong National University opened the 'Department of Educational Technology' for the first time as a national university in 1996, opened the master's program in 2000 and the doctoral program in 2002, and is currently the only national university to have operated the 'Department of Educational Technology' for 27 years. This is a traditional department. The Department of Educational Technology identifies the educational demands needed in each field of the future 4th Industrial Revolution society and the learning and performance problems faced in the educational field, and plans, analyzes, designs, and designs optimal educational programs and EduTech learning environments to solve them. We train experts who can develop, implement, and evaluate.

Career Paths and Prospects: After majoring in educational technology, graduates can work as researchers at teaching and learning centers at universities or research institutes, corporate and public HRD experts, researchers at government-affiliated educational institutions, EduTech instructional designers, secondary school teachers and educational administrators, university professors, and on-line educators etc.

● Department of Mathematics Education

The Department of Mathematics Education is an institution that trains mathematics teachers and mathematics education experts equipped with both ability, personality, and theoretical and practical skills. It operates a variety of courses such as theoretical mathematics, mathematics education, general education, liberal arts, and special lectures. In addition, we have various systems and facilities to support students' academic and autonomous activities, such as scholarships, study clubs, and support for preparing for the teacher employment examination.

Career Paths and Prospects: Most graduates are working as mathematics teachers in secondary schools, and in recent years, fields requiring mathematics majors, such as financial economics, information technology, and the design industry, are expanding. Accordingly, the career paths of graduates are expected to diversify, including employment at companies, research institutes, and public institutions.

● Department of Computer Education

The Department of Computer Education trains middle school teachers in the information and computer fields with humanities knowledge and SW and AI education capabilities, as well as creative software development experts in the field of the 4th Industrial Revolution. We operate a curriculum suitable for nurturing middle school teachers and creative software development experts with practical capabilities and character. We have established a diverse SW development environment and utilize cutting-edge IT equipment for educational practice.

Career Paths and Prospects: Graduates are demonstrating their great capabilities by entering the workforce as creative SW development experts, information/computer teachers, public officials in IT fields, and public/private companies and research institutes in the IT field.

● Department of Electrical and Electronic Education

The Department of Electrical and Electronic Education aims to train excellent secondary school teachers and advanced technical personnel in the fields of electricity, electronics, and communications, and through professors with extensive practical experience, hands-on training focused on the field, and classes in which students directly participate, they provide the qualities needed by society. We are focusing on cultivating it. We provide on-site practical training with the nation's highest level of department-specific multimedia information and communication labs, various electrical and electronic labs, sensor production labs, and clean rooms.

Career Paths and Prospects: In addition to being employed as middle school teachers in the fields of electricity, electronics, and communications, students are working as civil servants in the technical field, research institutes, and industrial companies.

● Department of Mechanical Education

The Department of Mechanical Education aims to train technical high school teachers who have both theoretical and practical skills in the field of mechanical engineering, which plays a central role in modern industry, as well as a well-rounded personality and broad culture.

Career Paths and Prospects: Graduates can demonstrate their capabilities by being appointed as top-level mechanical teachers in the country, as well as working as civil servants in the technical field, research institutes, and industrial companies.

College of Life Sciences and Health and Welfare



Cultivating a wide range of talents to build Andong University's unique brand value.

The College of Life Sciences and Health & Welfare, a specialized college, consists of Department of Life Sciences, Department of Vaccine Biotechnology, Department of Plant Medicine, Department of Smart Horticultural Science, Department of Forest Science, Department of Food and Biotechnology, Department of Food and Nutrition, Department of Nursing, Department of Child and Social Welfare, Department of Physical Education, and Fashion Life. 60 full-time professors with excellent education and research capabilities teach around 1,500 undergraduates and graduates.

The College of Life Sciences and Health & Welfare aims to prepare students to contribute to the fields of biology, agriculture & life, food and health care, health & welfare based on discovering and nurturing the specialized fields of universities and providing customized education in connection with local industries.

● Department of Vaccine Biotechnology

The Department of Vaccine Biotechnology trains professionals in the field of vaccine and biopharmaceutical research and development to effectively respond to the frequent emergence of new variants of infectious diseases such as viruses and bacteria. Based on basic major knowledge such as biochemistry, immunology, and molecular biology, we have established a differentiated curriculum to cultivate high-level talents with field practical skills necessary for the vaccine industry and advanced biotechnology fields. In addition, we are operating specialized training courses to cultivate customized talent required in corporate sites through internships and field training in connection with local vaccine-related research institutes and companies such as SK Bioscience, Animal Cell Verification Support Center, and Vaccine Commercialization Center. By organizing a faculty with world-class research capabilities, we are continuously cultivating master's and doctoral level experts and producing creative research results through a curriculum linking undergraduate and graduate schools.

Career Paths and Prospects: The creation of a national vaccine industry cluster in the region is being actively promoted, and as the hosting of the bio-life industrial complex is confirmed, the demand for local resident professionals in the vaccine and biopharmaceutical industry is expected to increase rapidly. In addition, with continued support from Gyeongbuk Province and Andong City, a program to build a specialized department with improved curriculum, teaching methods, and educational environment is in progress. After graduation, you can get a job at a world-class vaccine organization located in the region, such as SK Bioscience or the Animal Cell Verification Support Center, and you can also advance to government agencies in charge of health and medical care, such as the Korea Disease Control and Prevention Agency, the Korea Agricultural and Livestock Quarantine Center, and the Ministry of Food and Drug Safety. Additionally, if one advances to graduate school, one can acquire expertise as an advanced researcher by obtaining a master's/doctoral degree in vaccine and drug development through creative research.

● Department of Life Sciences

The Department of Life Sciences aims to cultivate well-rounded and creative global talent who will contribute to the field of biotechnology by providing education and research on everything from basic studies such as zoology, botany, and microbiology to cutting-edge biotechnology, an applied field of life science. Through this, we will foster next-generation scientific talent who will contribute to various fields of biotechnology, such as training experts in the ecological and environmental industry to maintain biodiversity and restore ecosystem function, developing new bio drugs and vaccines, and developing high value-added convergence bioactive new materials using hemp and natural materials. We are aiming for positivity.

Career Paths and Prospects: One can advance to graduate school or study abroad, work at university hospitals and research institutes at national and public institutions, pharmaceutical companies, companies related to food, environment and ecology, and companies related to life sciences.

● Department of Smart Horticulture Science

Horticultural breeding not only learns and researches cultivation management techniques for producing high-quality horticultural crops based on an understanding of the characteristics and physiology of various horticultural crops, but also strives to mass propagate and cultivate excellent new varieties using tissue culture and cutting-edge biotechnology techniques. In addition, we are offering practical courses such as wellness horticulture, tourism agriculture, and environmental horticulture that are appropriate for the latest trends, and through this, we aim to cultivate the best horticultural experts at home and abroad.

Career Paths and Prospects: Graduates are entering horticultural-related national, public, and corporate research institutes, agricultural technology centers, plant quarantine stations, agricultural product export/import companies, horticultural product processing/distribution companies, agricultural materials companies, horticultural academies, and indoor landscaping fields.

● Department of Forest Science

Forest science is the most important future value in the era of climate change in the 21st century. It is a study to create, manage, produce, and use forests, which are sustainable resources, in an ecologically healthy manner and to lead a prosperous life for humanity. The Department of Forest Science aims to cultivate future-oriented and professional forest scientists to enhance public interest functions and the value of life by educating convergent forest science theories and practices such as forest resource creation, forest protection, sustainable forest management, and forest healing.

Career Paths and Prospects: Korea Forest Service, local government forestry, agricultural, environmental, National Institute of Forest Science, national and public arboretum, National Institute of Ecology, National Park Service, Forest Therapy Center, Korea Mountain Conservation Association, Korea Forestry Technology Association, Korea Forest Fire Association, forest management Companies, forest cooperatives, corporate biological research institutes, herbaria, animal and plant quarantine stations, industries related to manufacturing and handling chemical products such as medicines, cosmetics, and food, etc.

● Department of Plant Medicine

Plant medicine is a specialized field of applied biology specialized in the field of plant protection that diagnoses and treats pathological disorders of plants caused by microorganisms and plant damage and physiological disorders caused by pests. The Department of Plant Medicine is comprised of the basic biology fields of microbiology (bacteria, fungi, viruses), entomology (insect diversity, pests, natural enemies), insect physiology, genetics, molecular biology, ecology, and statistics, and the applied fields of plant disease and pest diagnostics, eco-friendly pest control, beekeeping, pesticides and quarantine science. Our educational goal is to cultivate professional plant doctors and practical human resources for the insect industry through studies in science,

Career Paths and Prospects: Graduates work at national and public research institutes, plant quarantine officials (agricultural and research positions), agricultural leadership positions, city and county agricultural administrative positions, national civil servants of the Ministry of Agriculture, Food and Rural Affairs, agricultural cooperatives, plant hospitals, forestry cooperatives, apple cooperatives, leaf and tobacco production cooperatives, and pesticides. Related industries such as companies, natural enemy companies, seedling companies, fertilizer companies, bee farming cooperatives, etc.

● Department of Food and Biotechnology

We teach basic theories and commercialization courses related to the overall food industry in order to cultivate professionals responsible for producing high-quality, highly functional, and safe food. The educational goal is to develop new food materials, develop processing technology, maintain food quality, build knowledge about hygiene, safety, and functional foods, and develop the ability to apply practical technologies necessary for industry. Teaching subjects that can lead to teacher certification are provided.

Career Paths and Prospects: Graduates enter food companies, food distribution, pharmaceutical and cosmetics companies, the restaurant industry, agricultural and industrial high schools and university educational institutions, national and public and government-funded research institutes, food-related administrative agencies, and agricultural and food-related public enterprises.

● Department of Nursing

The Department of Nursing educates students to acquire specialized nursing knowledge and practical nursing skills to promote health and well-being based on the dignity of human life. The educational purpose is to nurture creative global nursing leaders with character and practical skills who can contribute to national society and human development, and we operate a variety of curricula to help students fulfill their roles and responsibilities as professional nurses.

Career Paths and Prospects: University hospitals, general hospitals, overseas hospitals, health teachers, pharmaceutical companies, Ministry of Food and Drug Safety, Ministry of Health and Welfare, public health centers, public health clinics, National Health Insurance Corporation, Health Insurance Review and Assessment Service, insurance companies, Korean Red Cross Blood Center, government-funded research institutes, it is possible to advance into various fields such as nursing officers, universities, airlines, health examination centers, hospices and social welfare facilities, and the medical industry.

● Department of Earth and Environmental Sciences

The Department of Earth and Environmental Science trains specialized technical personnel in the geology field, including exploration of the Earth, land use, resource development, disaster prevention, and earthquakes, and nurtures professional technical personnel in environmental fields such as water quality, air, and soil with an understanding of the global environment. We are aiming for it. After graduation, one can work as a global environmental expert in geological surveys, mineral and energy resource development, geological disaster and environmental pollution management, and groundwater resource management.

Career Paths and Prospects: Graduates work at Korea Institute of Geoscience and Mineral Resources, Korea Institute of Ocean Science and Technology, Korea Basic Science Institute, Polar Research Institute, Korea Institute of Civil Engineering and Building Technology, National Institute of Environmental Research, Korea Environmental Industry Research Institute, National Disaster and Safety Research Institute, Korea National Oil Corporation, and Korea Gas Corporation, Agricultural Infrastructure Corporation, Korea Rural Community Corporation, Korea Water Resources Corporation, Korea Mineral Resources Corporation, Korea Mine Reclamation Corporation, Korea Atomic Energy Environment Corporation, Geotechnical Corporation, Environmental Survey Management Company, Construction Environment Consulting Company, Construction Company, Mineral Resources Development Company, universities, research institutes, state-run enterprises, and companies related to national land development and resource development, including groundwater development companies.

● Department of Children and Social Welfare

The Department of Children and Social Welfare trains experts in the field of children and social welfare who can properly understand and guide various social phenomena in order to improve the quality and welfare of human life. The child studies major is divided into child counseling and child care, and trains professionals related to children's development process, problem behavior counseling, and infant care. The social welfare major strives to cultivate talent who can professionally solve various problems in our society, from children to the elderly.

Career Paths and Prospects: Graduates can work as childcare teachers at public, private, and workplace daycare centers, child care foundations, children's book publishers, comprehensive child care support centers, children's play and education institutions, social welfare public officials, comprehensive social welfare centers, local social welfare-related associations, etc. Child protection agencies, local children's centers, Wee centers, youth counseling and welfare centers, youth shelters, school social welfare, etc., healthy families and multicultural family support centers, welfare centers for the disabled, welfare centers for the elderly, dementia care centers, etc., international organizations and NGOs: World Vision, You can advance to Vision, Good Neighbors, Green Umbrella Children's Foundation, Save the Children, etc., corporations and public institutions: National Health Insurance Corporation, Korea Workers' Compensation and Welfare Service, National Pension Service, Child Rights Guarantee Agency, Korea Youth Counseling, Welfare and Development Institute, etc.

● Department of Physical Education

The Department of Physical Education aims to cultivate professionals who help the holistic growth of all people participating in physical activities through direct and indirect knowledge needed in the field of sports, and fosters holistic leaders by cultivating comprehensive knowledge and practical skills in physical education.

Career Paths and Prospects: Graduates will enter the fields of health and exercise managers, sports psychology counselors, public and private sports managers, sports leaders and coaches of each sport, sports journalists, school physical education instructors, sports facility safety personnel, rehabilitation and personal trainers, and sports researchers.

● Department of Fashion Lifestyle

- This department trains creative professionals in the fashion and lifestyle fields with practical skills in utilizing digital tools.
- Students win numerous contests and awards for excellence every year.
- This department was selected as a specialized department and convergence major related to digital media design.
- Opening and providing overseas internship and employment opportunities

Career paths and prospects: Fashion and lifestyle-related designers, MDs and stylists, media creators, cultural product designers and content developers, etc.

● Department of Food and Nutrition

It consists of the fields of food science, culinary science, nutrition, and food service management, and trains professionals who can contribute to the improvement of people's health through scientific and rational dietary management.

Career Paths and Prospects: Graduates can work as nutrition teachers and nutritionists (schools, hospitals, industries, public health centers and consignment companies), food company researchers, product quality evaluation and managers, and food service managers at restaurant companies. Certifications that can be obtained include level 2 professional teacher (nutrition teacher), nutritionist, hygienist, food technician, level 3 health educator, and Korean food chef.



College of Engineering



Pioneering and creating a new future by leading the 4th Industrial Revolution technology.

The College of Engineering fosters professional engineers with excellent creative thinking and field adaptability based on engineering expertise. Recently, as the 4th Industrial Revolution technologies such as robots, big data, artificial intelligence, and autonomous driving are leading innovative changes, we train creative engineers who develop new ideas and innovative products by converging with various fields. In particular, we aim to cultivate glocal engineer leaders who will lead the era of the Fourth Industrial Revolution by converging robots, sensors, new materials, machinery, and IT technologies, which are essential elements of the Fourth Industrial Revolution technology.

● Department of Electrical and New Materials Engineering

The Department of Electrical and New Materials Engineering trains professional manpower with both electricity and materials-related technologies, such as future electric vehicles, solar cells and other renewable energy, power systems, displays, and secondary batteries, through the convergence of electrical engineering and new materials. In the second year, it is divided into the Electrical Energy Engineering major and the New Materials Energy Engineering major. Electrical Energy Engineering has research areas such as power systems, power electronics, power semiconductors, and control systems, and New Materials Energy Engineering covers electrical and electronics such as solar cells and semiconductor materials. Research areas include materials, nano and biomaterials, and secondary battery materials. In the second year, a common major course is operated, allowing all students who wish to obtain a double major or minor. More than 90% of undergraduate students perform internships in industries

and research institutes, and are guided to acquire top 10 employment qualifications such as electricians. In addition, we are striving to cultivate talent with creative thinking, comprehensive problem-solving skills, and design capabilities through PBL (Problem-based Learning) education through design thinking.

Career Paths and Prospects: It is possible to advance to middle school teachers through employment in parts and materials industries such as electric vehicles and semi-conductors, which are future strategic industries, and research institutes, as well as entering graduate school and completing teaching courses. In particular, recently, there is a wide range of advancement and employment based on learning capabilities. Through our guidance, we have achieved results such as employment at large corporations such as Samsung Electronics, POSCO, Samsung Electro-Mechanics, and Samsung SDI, and advancement into famous domestic graduate schools.

● Department of Semiconductor and New Materials Engineering

In the Department of Semiconductor and New Materials Engineering, you learn basic and practical knowledge about semiconductors, batteries, and advanced metals, which are the nation's cutting-edge core technologies. Recently, the importance of the semiconductor and new material fields is increasing as the core parts industry of the 4th Industrial Revolution based on mobile phones, mobile devices, AI home appliances, and advanced semiconductors has grown rapidly. Our department provides a curriculum to train professionals suitable for these fields, practical training using cutting-edge experimental equipment, and design courses to demonstrate leadership and cooperation.

Career Paths and Prospects: Graduates of our department advance into domestic and international semiconductor and battery companies, high-tech metal-related industries, research institutes, government officials related to their major, and graduate schools. We have received a total of KRW 1.2 billion worth of government support (semiconductor professional training project), so our graduate school advancement rate is high. The recent employment rate is over 70% for undergraduate students and over 90% for graduate students. (Excellent employment cases: Apple, Samsung Electronics, LG Chem, SK Hynix, POSCO, Hyundai Steel, etc.)

● Department of Mechanical Engineering

Mechanical engineering is a department that allows you to get a job in any industry where there are machines. With the goal of nurturing human resources with engineering knowledge related to mechanical engineering in order to be employed in various industrial fields and demonstrate their capabilities, we provide cutting-edge experimentation equipment and various software such as computerized design, thermal-fluid systems, automation, robots, and precision processing. Through creative comprehensive design, customized education for industrial sites through industry-academia cooperation, and language training support, we foster key human resources who will lead the global era with foreign language skills..

Career Paths and Prospects: It is possible to enter the automotive, aviation, robotics, new and renewable energy, shipping, semiconductor and mobile phone fields, civil service, and graduate school.

● Department of Smart Mobility Engineering

As a joint department of three national universities (Andong National University, Kyungpook National University, and Kumoh National Institute of Technology), it awards joint degrees through a joint curriculum. The Department of Smart Mobility Engineering is a department that deals with hardware and software related to the movement of people and objects, specifically autonomous driving, electric vehicles, hydrogen vehicles, aviation and land/sea drones, unmanned transportation systems, smart factories, robots, and smart farms. Our goal is to cultivate three-dimensional convergence talents suitable for applied fields. Academically, we train talent suited to the industrial and technological needs of the smart mobility field through a convergence and application curriculum in accordance with the demands of the future mobility industry in fields such as machinery, computers, electricity/electronics, computers, and information and communications.

Career Paths and Prospects: Graduates will be employed in the automobile/robot/smart factory/smart farm/ship/aviation/drone/defense industries, as well as in parts or application technology companies related to these. Also, it is possible to go on to higher education as civil servants, researchers at national research institutes, and graduate schools at home and abroad.

● Department of Robotics Engineering

Robotics is a core technology that plays an important role in the era of the 4th Industrial Revolution. It provides smart manufacturing based on mechatronic system design/control technology and CAD/CAE/CAM to train future-oriented engineers in the field of smart machines and robots. We focus on teaching technology and software (S/W)-based artificial intelligence technology. Students will acquire smart innovation capabilities through theoretical education and strengthening practical skills, and can advance into various new future industries such as smart factories, artificial intelligence, smart electronics, virtual reality, and games as well as the machinery/robotics field. In addition, the robot education course is operated to enable students to obtain teacher certification and advance to secondary school teachers after graduation..

Career Paths and Prospects: Graduates work in robots, robot parts, automobiles, heavy industry, defense industries. They can also advance into industrial fields such as shipbuilding, aviation, automated machinery, machinery/electronics, communications industry, energy machinery, and power plants, as well as into positions as teachers, civil servants, research institutes, and graduate schools.

● Department of Electronic Engineering

The Department of Electronic Engineering focuses on training engineers in the current and future electronic engineering fields: embedded systems, SoC, and next-generation communications. The Department of Electronic Engineering also quickly adopts rapidly changing academic disciplines and technologies and operates a curriculum that organically combines the theory and practice needed in industry and academia to produce graduates with excellent qualifications and a proactive mindset and maintain an excellent employment rate.

Career Paths and Prospects: There are electronic engineering-related companies and national research institutes (Samsung Electronics, LG, ETRI, Electronic Component Research Institute), venture companies, and technical civil servants where you can gain professional skills and extensive experience.

● Department of Digital ICT Engineering

The Department of Digital ICT Engineering is a department that studies innovative technologies that realize the information age and ubiquitous society, and focuses on educating ubiquitous information and communication technology (u-IT) that can be applied to various fields. Faculty members with experience working at research institutes, working in industry, and operating venture companies provide students with the education they need in the field, nurturing experts with practical skills.

Career Paths and Prospects: It is possible to advance into large corporations (Samsung Electronics, LG Electronics, KT, etc.), IT-related ventures and small and medium-sized businesses, research institutes (ETRI, etc.), civil servants, domestic graduate schools, and foreign graduate schools.

● Department of Software Convergence

The Department of Software Convergence is a department that aims to cultivate practical professionals with capabilities in key fields to lead the 4th Industrial Revolution based on software knowledge and application ability. It is a software-centered university (hereinafter referred to as SW-centered university) hosted by the Ministry of Science and ICT. It has been selected as a phased project and is receiving a total of 5 billion won in national and local government budget for two years from January 2023. We provide students with benefits such as operating an internship course linked to industry-university projects and capstone design, overseas university education and overseas joint projects, support for a cutting-edge SW lab environment, and mileage scholarships for SW-centered universities to improve major skills and strengthen employment capabilities.

Career Path and Prospects: It is possible to advance into SW convergence specialized fields such as SW developer, mobile app/web/content/game/digital video/artificial intelligence development, and network/security/software management. We have a high employment rate based on a curriculum appropriate for the convergence era, and the quality of employment is also high.

● Department of Computer Engineering

Computer engineering, which will lead the future information society, is a discipline that requires logical thinking, an eye for the whole, and systematic and organized thinking skills. Based on this thinking ability, our department aims to cultivate talents who will play a pivotal role in developing high-performance software and cutting-edge systems that process and process information using computers to contribute to improving the quality of life for humanity. We are opening and operating essential courses for the 4th industrial revolution, and are the department in charge of the "SW-centered university development project," the best department in the department evaluation within the university in 2022 (educational environment, teaching achievements, and educational outcomes), and the number of people inflow to transfer departments within the university. As this department has the largest number of departments, it provides opportunities to run department major clubs and participate in various undergraduate projects. To train engineers with comprehensive problem-solving skills, we provide education in computer programming, network security, artificial intelligence, big data, databases, object-oriented software systems, web programming, network programming, computer architecture, logic circuits and microprocessors.

Career Paths and Prospects: Graduates can advance to IT-related large companies and ventures, public institutions, research institutes, academia, study abroad, and work overseas. They can work in areas such as artificial intelligence, computer security, web and mobile app development, programmers, public servants in the computer field, system engineers, and DB. One can advance into various computer engineering-related fields, such as design and management, and network administrator.

● Department of Construction Systems Engineering

The Department of Construction Systems Engineering plans, designs, constructs, and maintains social infrastructure facilities such as roads, bridges, tunnels, railroads, ports, dams, power plants, airports, and water and sewage facilities necessary to improve the quality of human life in modern civilized society. In addition, we provide a broad and in-depth educational and research environment that combines theory and practice through a cutting-edge educational environment equipped with the latest equipment and excellent professors with diverse practical experience, allowing students to play a pivotal role in the construction industry after graduation. Our goal is to train professional engineers.

Career Paths and Prospects: Employment in various fields depending on aptitude, including technical civil servants, public corporations such as the Korea Expressway Corporation, Korea Water Resources Corporation, and Korea Land and Housing Corporation, construction companies specializing in construction, design, and supervision, public research institutes related to construction, and teachers at industrial high schools. It is possible, and the outlook is very bright due to the continuous demand for manpower due to the nature of the construction field.

● Department of Environmental Engineering

The Department of Environmental Engineering provides a high-level education and research environment that combines theory and practice with excellent faculty, state-of-the-art equipment, and laboratories to foster professionals who will lead green growth in the 21st century. We foster globally competitive talent by obtaining engineering education certification, operating various educational programs including internships, implementing a full-time professor counseling system, establishing a cooperative system between industry, academia, government, and research, and concluding international exchange agreements with leading overseas universities.

Career Paths and Prospects: Graduates can become environmental civil servants, national and public enterprises such as the Korea Water Resources Corporation, research institutes (National Institute of Environmental Research, provincial and provincial health and environment research institutes, national and public research institutes, corporate research institutes, etc.), design and construction companies, construction environment companies, and environmental prevention facilities.

● Department of Architectural Engineering

Established in 1997, the Department of Architectural Engineering systematically fosters creative human resources by subdividing it into design, history/theory, media, and engineering technology areas. In particular, we are nurturing professional architectural personnel required by the times and local communities through active use of traditional architectural drawing studios, architectural reinterpretation of traditional culture, and constructivist-based project solution methods.

Career Paths and Prospects: Employment conditions are very good with no major ups and downs due to the wide range of employment fields (construction companies and design offices, traditional architecture and cultural assets, etc.) and steady demand for manpower.

● Department of Smart Sensor Engineering

Smart sensors are a core technology of the 4th industrial era that combines sensor technology and semiconductor technology to give objects sensing, judgment, and communication functions. The Department of Smart Sensor Engineering is a specialized department to nurture sensor talent newly established in 2023 to suit future demands. It provides practical talent that produces results in the sensor industry field, multi-talented talent that can combine intelligent sensor technologies, and creativity and convergence that can create sensor application products. Our educational goal is to cultivate talented individuals.

Career Paths and Prospects: Graduates can be employed in companies in the 4th industrial revolution such as intelligent robots, smart homes, factories, farms, and self-driving cars, as well as in the sensor industry. Additionally, by going to graduate school, one can become a researcher in the cutting-edge sensor field and even start a smart sensor system business. As the sensor industry is growing rapidly as entering the 4th Industrial Revolution, this is a department with very bright prospects for employment and entrepreneurship.

● Department of Chemical and Biological Engineering

As a convergence department based on natural science and engineering knowledge, it aims to cultivate scientists and engineers with a wide range of knowledge and character across various academic fields such as traditional chemical-related industries as well as cutting-edge BT, IT, and NT. Nano, semiconductor, bio, and environmental science and technology, based on chemistry, life science, and engineering knowledge, are core technologies that will lead future industries in the 21st century and are required to play a central role in high value-added and high-growth industries. Accordingly, our department focuses on nurturing talents who can demonstrate their abilities based on logical thinking and rational understanding in various fields based on basic academic and engineering knowledge by operating a convergence curriculum required by the future society.

Career Paths and Prospects: Graduates can advance into companies or research institutes related to medicine (vaccines), new materials, food, fiber, fertilizers, pesticides, etc. civil servants such as environmental technicians, chemical engineering technicians, firefighters, forensic investigators, or advance to graduate school.



Department of Liberal Studies



The Department of Liberal Studies at Andong National University supports students to explore their abilities and qualifications through major exploration and to select a major that suits their aptitude when they advance to their second year, allowing them to demonstrate their capabilities to the fullest. Our department provides a wide and in-depth educational program to help students unleash their potential and explore career paths, and provides education to promote core competencies needed in the era of the 4th Industrial Revolution and convergence technology. We will do our best to help you plan your future while freely exploring the major that suits you during your first year.

□ Department of Liberal Studies operation plan (exploring the major and career path that suits you)

○ Support for major and career exploration

- College of Liberal Studies students are supported to decide on a major that is suitable for them during the first-year curriculum, and can complete their major starting from the second year.
- Professors and experts in the field of study support classes
- Provide consultation opportunities with department major professors for career exploration and major decision making

○ Providing self-directed learning activities and education

- Support to create and implement self-directed study plans during college life
- Provide education to cultivate a broad and deep academic foundation based on Andong University's core competencies (character, self-direction, expertise, creativity, communication)

○ Major decision reflecting aptitude and preference

Division	Detail	Note
When to decide on a major	2nd semester of 1st year (decision on major before entering 2nd year)	
Major Decision Department	Any Department (or Major) Can be Selected However, the Departments of the College of Education, the Department of Nursing, and the Department of Adult Learners Are Excluded	
How to Decide on a Major	In Accordance with the Standards Set by the University and the Department of Liberal Studies	
Graduation Criteria	Graduate after Completing the Curriculum of the Department One Has Decided to Major in	

● Department of Adult Learner

The Department of Adult Learner aims to establish a lifelong learning system that meets the needs of various adult learners in the community and to train professionals who will lead the super-aging society and the 4th Industrial Revolution through a professional and systematic curriculum. To this end, we opened the first and only adult learner “Social Welfare” major at a national university and the “Sports Leisure Studies” major, which can contribute to the development of citizen happiness and leisure through sports.

The Department of Adult Learner seeks to cultivate adult learners with a self-directed and creative learning attitude

by operating a customized curriculum and flexible academic system that suits the characteristics and needs of various adult learners. In addition to online-oriented classes for office workers and full-time students, flexible classes such as early graduation through the social experience credit recognition system, intensive completion system for completing classes in a short period of time, blended learning that combines the advantages of online and offline classes, and weekend and night classes. We are doing our best to provide various learning conveniences so that you can successfully complete your four-year degree program.

● Department of Adult Learner, Social Welfare Major

The social welfare major for department of adult learner is the “only” and “first” social welfare major for adult learners in the country. The social welfare major aims to “train social welfare experts” who can improve the quality of life of the people through scientific analysis and intervention strategies on various social problems such as rapid aging, low birth rate, increasingly serious gap between rich and poor, and social polarization. In addition, we operate a holistic education system to cultivate talent with the basic knowledge, qualifications, theoretical knowledge, and practical capabilities required as a social welfare expert so that individuals, families, communities, and even the nation can function properly.

Career Paths and Prospects: After obtaining level 1 and 2 social worker qualifications, graduates can advance to social welfare-related organizations and local governments as social welfare public servants (experts), and work as social welfare workers such as school social workers, medical social workers, and mental health social workers. It is possible to advance into a specialized field by acquiring professional qualifications, and it is possible to establish and operate long-term care facilities for the elderly, such as home welfare centers and senior care facilities.

● Department of Adult Learner, Sports and Leisure Studies Major

The sports and leisure studies major in the department of adult learner was established for adult learners who are leading the digital era of AI (artificial intelligence) through the convergence of sports and leisure. The sports leisure studies major aims to “train sports instructor experts” equipped with the theoretical and practical skills necessary to strengthen field practical capabilities based on sports in line with the high-tech industrial era. The sports and leisure studies major cultivates the basic knowledge, leadership, theory, and practical skills required for field application required by sports experts in the era of cutting-edge science, and further operates a curriculum to cultivate customized global talent.

Career Paths and Prospects: After obtaining qualifications as a sports instructor (level 1, 2), sports psychological counselor, and health and exercise manager, graduates can advance to sports-related organizations in the community and local government sports officials. In addition, they can work as physical education and sports experts in national institutions such as central and local governments (Sports Association and Sports Association for the Disabled), sport associations and federations for each sport, public corporations, public corporations, and public institutions, and as sports coaches and sports instructors in general schools.

Graduate Schools

General Graduate School

The General Graduate School studies academically profound theory and various application methods in order to nurture high-quality human resources such as scholars who will lead the academic development of an informational society, experts who can resolve a multitude of social problems, and leaders who can contribute to the prosperity of the nation and our community.

Graduate School of Administration and Management

The Graduate School of Administration and Management aims to contribute to national competitiveness and economic development, teaching government employees and executives of official businesses new theories and techniques of economy and business administration.

Our graduates are currently showing their prominent skills and demonstrating excellent leadership in a variety of fields in society to lead national development.

Graduate School of Education

The Graduate School of Education serves the role of nurturing creative and competent education experts required by an information-based society by teaching comprehensive theories of education and academics and their methods of application.

The Graduate School of Education offers two courses: the professional educator course and the re-education course.

Graduate School of Creative Industry

The Graduate School of Creative Industry is a special-purpose graduate school dedicated to fostering professional human resources in cultural content areas to contribute to the development of cultural industry in our knowledge-based society.

The master's course operates in six major fields: spatial content, cultural planning, cultural education, culture and arts management, storytelling, and festival performances. The Ph.D. program specializes in interdisciplinary content and fosters professional human resources who present various perspectives on cultural content.



Campus Map



- | | |
|--|---|
| A Student Union Hall | W2 Solmoe Culture Hall |
| E1 Central Library | W3 Gymnasium |
| E2 Creative Talent Hall | W4 Welfare Centre |
| E3 University Main Administration Hall | W5 Language Center |
| E3-1 Annex | W6 Dormitory Garam |
| E4 Humanities Hall | W7 Information & Communication Center |
| E5 Education Hall | W8 Social Sciences Hall |
| E6 International Exchange Hall | W9 Museum |
| E7 Gosiwon | W10 Engineering Hall I |
| E8 Andong English Village | W11 Engineering Hall II |
| E9 ROTC Hall | W12 Engineering Hall III |
| E10 Natural & Life Sciences Hall I | W13 Life Science Hall |
| E11 Natural & Life Sciences Hall II | W14 Joint Experiment and Practice Laboratory |
| E12 Regional Industry-University Cooperation Hall | W15 Dormitory Solbit |
| E13 Fine Arts Hall | W16 Dormitory Solmoe |
| E14 Music Hall | |
| E15 General Sports Center | |

ANDONG NATIONAL UNIVERSITY IS GETTING CLOSER!

Only Two Hours from *Seoul* to *Andong*!

- In January 2024, Seoul Station will operate 8 times a day (4 up/4 times down)
- Shortened to 1 hour and 20 minutes after completion of the double track railway project.

Living area within 1 hour of Andong in Seoul and Busan

- The Andong-Busan (Bujeon) extension goal is to open in 2024.



High Speed Train KTX-EUM

Student Capacity Building
Gyeongbuk Core National University
S-CORE ANU



국립안동대학교
ANDONG NATIONAL UNIVERSITY

1375, Gyeongdong-ro (SongCheon-dong) Andong, Gyeongsangbuk-do, 36729, Republic of Korea
TEL +82.54.820.5114 FAX +82.54.820.7115 Web www.anu.ac.kr